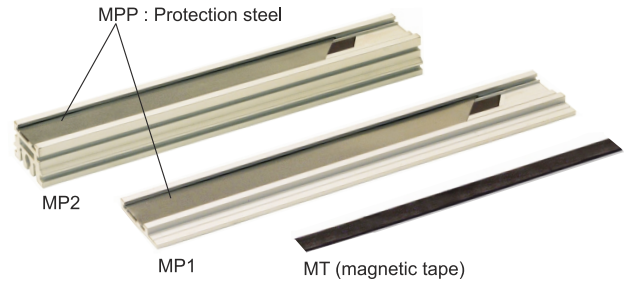


# MT2, MT2,56, MT5 MP1, MP2

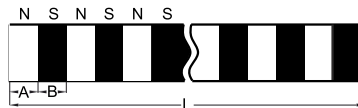
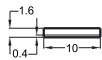
## Magnetic tapes and Aluminium profiles

- + 2 mm, 2,56 mm, 5 mm pole pitches
- +  $\pm 40\mu\text{m}$ ,  $\pm 20\mu\text{m}$ ,  $\pm 10\mu\text{m}$  accuracy
- + Self adhesive magnetic tapes
- + Industrial standart dimensions 10 mm x 1,5 mm
- + IP 67 protection



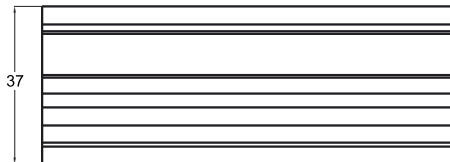
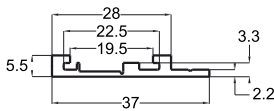
### Magnetic tape technical specifications

Pole pitch	2 mm, 2,56 mm, 5 mm
Accuracy	$\pm 40\mu\text{m}$ , $\pm 20\mu\text{m}$ , $\pm 10\mu\text{m}$
Dimensions	10 mm x 1,5 mm
Max. stroke	Up to 25m single piece.,
Cover strip	Stainless steel
Mechanical fixing	Self adhesive
IP degree	IP 67
Operating temperature	-20°C ... +80°C
Storage temperature	-30°C ... +90°C

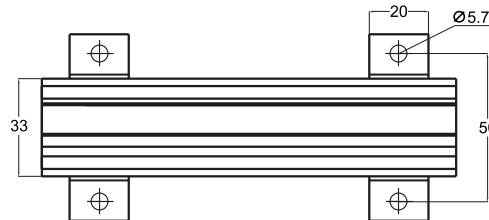
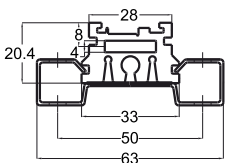


MT (magnetic tape)

Pole pitches	A (mm)	B (mm)	L
MT 2	2	2	Up to 25m single piece. Longer stroke on request
MT 2,56	2,56	2,56	
MT 5	5	5	



MP1 Aluminium profile



MP2 Aluminium profile

Model	Length
(example) MTP	2M
MTP (protection steel)	2M : 2 meter (Up to 25 meters)

Model	Length
(example) MPP	2M
MPP (protection steel)	2M : 2 meter (Up to 25 meters)

Model	Length
(example) MP1	2M
MP1 MP2	2M : 2 meter (Up to 3 meters)

Model	Pole pitches	Accuracy	Length (meter)
(example) MT	5	A40	5M
MT (magnetic tape)	5 : 5mm 2,56 : 2,56mm 2 : 2mm	A40 : $\pm 40\mu\text{m}$ A20 : $\pm 20\mu\text{m}$ A10 : $\pm 10\mu\text{m}$	5M : 5 meter (Up to 25 meters)