

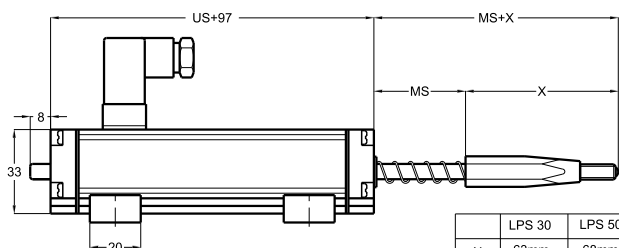
Linear potentiometers Spring return, Standard series

- + Measuring range 30 - 150 mm
- + Long mechanical life 100 million cycles
- + Excellent repeatability <0.01 mm
- + Infinite resolution
- + 5 KOhm or 10 KOhm

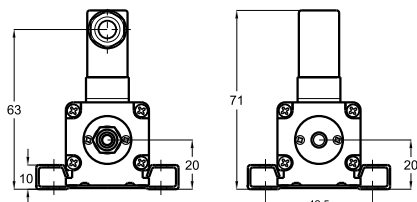
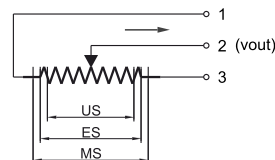
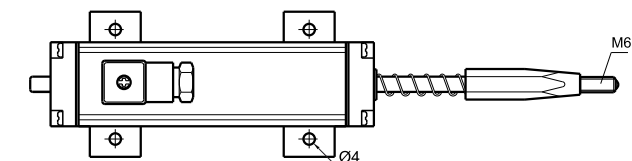
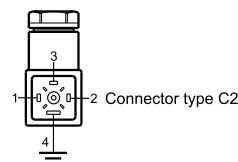


Technical specifications

Measurement stroke	30 to 150 mm
Linearity	± %0,05
Repeatability	< 0,01 mm
Resolution	Infinite
Resistance	5 KOhm or 10 KOhm
Resistance tolerance	± %20
Load resistance	100 KOhm min.
Recommended cursor current	<1 µA
Permissible applied voltage	28 VDC max.
Electrical connections	4 pin connector
Displacement speed	< 5 m/s
Mechanical life	100 million cycles
Case dimensions	33 mm x 33 mm
Case material	Anodized aluminium
Rod material	Stainless steel
Rod diameter	Ø6 mm
Mechanical fixing	Variable brackets
IP degree	IP 54
Operating temperature	-20°C ... +80°C
Storage temperature	-30°C ... +90°C



	LPS 30	LPS 50	LPS 100
X	63mm	68mm	88mm



LPS(mm)	30	50	75	100	125	130	150
US (Usefull Stroke)	30	50	75	100	125	130	150
MS (Mechanical Stroke)	34	54	79	104	129	134	154
L (Total Length)	173	192	218	243	268	273	293

Model	Measurement stroke (mm)	Linearity (%)	Resistance (KOhm)	Connector / Cable
(example) LPS	125	D	5K	C2
LPS	30 ... 150 mm	D : ± %0,05 (standard)	5K : 5 KOhm 10K : 10 KOhm	C2 : 4 pin connector